

Apollo



Say hello to user-friendly air sampling!

Apollo is a novel air sampling device that's user-friendly and designed for any indoor environment, greatly simplifying measurement of a range of airborne agents and improving indoor air quality.

Visit inbio.com/apollo/ to find out more.



Contents:

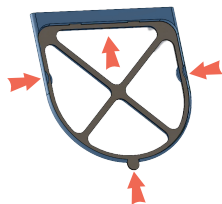
- Apollo Air Sampling Device
- Power Cable
- Filter Holder
- Filter(s)
- User Manual

Performing Air Sampling



- 1 Place the Apollo on a flat surface such as a table, shelf, or stand near an electrical outlet. The front of the Apollo (as shown) should be facing the room/sampling area.

- 2 Take a filter out of the ziplock bag, holding it carefully by the tabs on the top or bottom of the frame. Insert the top two tabs into the filter holder and click the rest of the filter into place by pushing down on the edges.



- 3 Slide the assembled filter into the slot at the top of the Apollo device, with the flat end at the top and the curved end facing down, checking that it is secure. The open side of the filter holder (as shown) should be facing the front of the device.



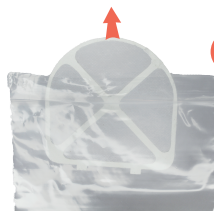
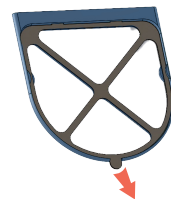
- 4 Plug the Apollo device into an electrical outlet, the LED light should turn on when plugged in correctly.

- 5 Run Apollo for the desired duration, typically 12-24 hours*. Make a note of the duration and include this information with returned samples.



- 6 When the sampling time is finished, turn the device off at the wall plug before attempting to remove the filter.

- 7 Remove the filter from the Apollo. Holding the edge of the filter frame, slide the filter off by pulling up and out on the bottom tab to remove it from the holder. Place the filter directly back into the ziplock bag and seal tight. Keep refrigerated until it can be shipped to InBio.



- 8 To replace the filter for the next sample, obtain a new filter with clean hands and repeat the process as described in point 2, being careful not to damage the filter. Ensure the filter is fitted firmly onto the filter holder. Insert back into the device.

*Visit inbio.com/apollo/ for information on recommended sampling durations, sample submission process and to order replacement filters. FAQs can be found on our website.