

LoTox™ Wheat Protein (Ethanol-Soluble)

Product Code: LTN-TAEE-1

Allergen: *Triticum aestivum* (Wheat)

Lot No: XXXXX

Source: Blanched Wheat flour

Mol. Wt: Tri a 15: 13kD; Tri a 20 & 21: 35-38kD; Tri a 26: 88kD; Tri a 28-30: 13-16kD; Tri a 36: 40kD; Tri a 40: 16kD.

LC-MS/MS: See product insert.

Concentration: See product insert.

Formulation: Preservative-free and carrier-free in 3.0M Urea, 10mM Sodium Acetate pH 4.6.

Storage: Store at -20°C. Re-freeze unused portion and aliquot into smaller quantities to avoid freeze/thaw cycles.

Expiration: See product insert.

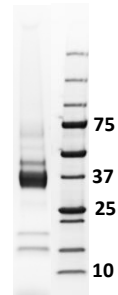
Released:

Lisa D Vaile

Notes:
(1) A LoTox™ product: Endotoxin 0.03 EU/μg.
(2) Relative abundance results are based on label-free quantification of precursor peptide ion intensity (peak area, incl. unique + razor peptides) using Proteome Discoverer 2.2 algorithms.
(3) Calculations of relative abundance can be variable and depend on multiple factors such as sample complexity, instrument resolution and analysis software.

Gel Image

Wheat Protein-Ethanol Sol.



For research and commercial use *in vitro*: not for human *in vivo* or therapeutic use.

An InBio® product. Made in the USA

www.inbio.com

700 Harris Street
Charlottesville, VA 22903
United States
(434) 984-2304
mail@inbio.com

Vision Court, Caxton Place
Cardiff, Wales CF23 8HA
United Kingdom
+44 (0) 2921 674 640
Info@inbio.com