

**Product Code:** RP-LD2-1

**Allergen:** rLep d 2 (*Lepidoglyphus destructor* allergen 2.0101)

**Lot No:** XXXX

**Source:** *P. pastoris*

**Mol. Wt:** 14 kD

**Purification:** Purified by multi step separation based on MW cutoff. Purity >95% by SDS-PAGE.

**Concentration:** See product insert

**Formulation:** Preservative-free and carrier-free in phosphate buffered saline, pH 7.4. Filtered through 0.22µm filter.

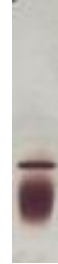
**Storage:** Store at -20°C. Avoid repeated freeze-thaw cycles.

**Expiration:** See product insert

**Notes:** (1) rLep d 2 is suitable for T-cell or other in vitro studies, but does **not** react in the Group 2 mite ELISA.  
(2) Not tested for endotoxin.

**Gel Image:**

rLep d 2



For research and commercial use *in vitro*: not for human *in vivo* or therapeutic use.

An InBio® product. Made in the USA

[www.inbio.com](http://www.inbio.com)

700 Harris Street  
Charlottesville, VA  
22903  
United States

(434) 984-2304  
mail@inbio.com

Vision Court  
Caxton Place  
Cardiff, Wales CF23 8HA  
United Kingdom

+44 (0) 2921 674 640  
Info@inbio.com