

Product Code: LTN-AOE-1

Allergen: *Anacardium occidentale*

Lot No: XXXX

Source: Blanched Cashew flour

Mol. Wt: Ana o 1: 50kD; Ana o 2: 55kD; Ana o 3: 14kD

LC-MS/MS: See Product Insert.

Concentration: See Product Insert.

Formulation: Preservative-free and carrier-free in 0.1M Potassium phosphate, 0.4M NaCl pH 8.0. Sterile filtered.

Storage: Store at -20°C. Re-freeze unused portion and aliquot into smaller quantities to avoid freeze/thaw cycles.

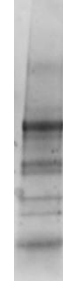
Expiration: XXXXX

Notes:

- (1) A LoTox™ product: Endotoxin ≤ 0.03 EU/ μ g.
- (2) Relative abundance results are based on label-free quantification of precursor peptide ion intensity (peak area, incl. unique + razor peptides) using Proteome Discoverer 2.2 algorithms.
- (3) Calculations of relative abundance can be variable and depend on multiple factors such as sample complexity, instrument resolution and analysis software.

Gel Image:

Cashew Flour Protein



For research and commercial use *in vitro*: not for human *in vivo* or therapeutic use.

An InBio® product. Made in the USA

www.inbio.com

700 Harris Street
Charlottesville, VA
22903
United States

(434) 984-2304
mail@inbio.com

Vision Court
Caxton Place
Cardiff, Wales CF23 8HA
United Kingdom

+44 (0) 2921 674 640
Info@inbio.com