

References:

1. Breiteneder H, Pettenburger K, Bito A, et al. The gene coding for the major birch pollen allergen Bet v 1, is highly homologous to a pea disease resistance response gene. EMBO J. 1989;8:1935-8.
2. Hoffmann-Sommergruber K, Susani M, Ferreira F, et al. High-level expression and purification of the major birch pollen allergen, Bet v 1. Protein Expr Purif. 1997;9:33-9.
3. Godnic-Cvar J, Susani M, Breiteneder H, et al. Recombinant Bet v 1, the major birch pollen allergen, induces hypersensitivity reactions equal to those induced by natural Bet v 1 in the airways of patients allergic to tree pollen. J Allergy Clin Immunol. 1997;99:354-9.
4. Schappi GF, Monn C, Wuthrich B, Wanner HU. Direct determination of allergens in ambient aerosols: methodological aspects. Int Arch Allergy Immunol. 1996;110:364-70.
5. Schappi GF, Suphioglu C, Taylor PE, Knox RB. Concentrations of the major birch tree allergen Bet v 1 in pollen and respirable fine particles in the atmosphere. J Allergy Clin Immunol. 1997;100:656-61.
6. S. Vieths, D. Barber, M. Chapman, et al. Establishment of recombinant major allergens Bet v 1 and Phl p 5a as Ph. Eur. Reference standards and validation of ELISA methods for their measurement. Pharmeuropa Bio&SN October 2012; 118-13.



Indoor Biotechnologies, Inc.
700 Harris Street,
Charlottesville, VA 22903
United States

Indoor Biotechnologies Ltd.
Vision Court
Caxton Place
Cardiff, Wales CF23 8HA
United Kingdom

Indoor Biotechnologies,
India Private Limited
Bangalore Bioinnovation Centre,
BioTech Park, Electronic City Phase 1
Bangalore-560100, India

Tel: (434) 984-2304
Fax: (434) 984-2709
Email: mail@inbio.com

Tel: +44 (0) 29 2167 4640
Email: Info@indoorbiotech.co.uk

Tel: +91-9901722009
Email: info@inbioindia.com

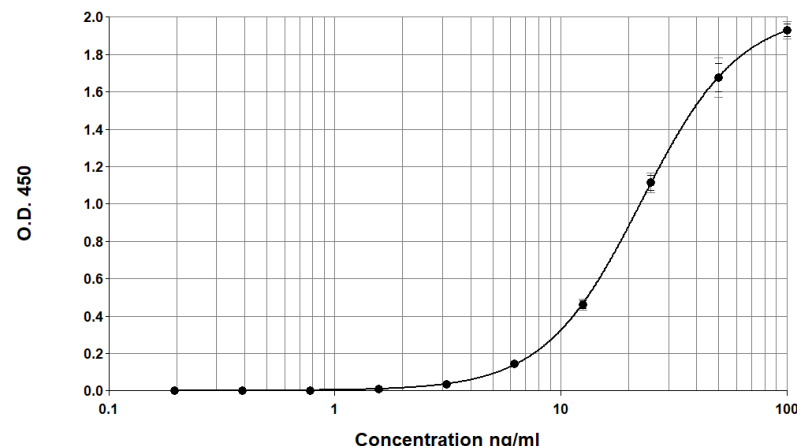


Bet v 1 ELISA kit (4B10/2E10)

Product Code: EL-BV1

Lot xxxxx

Sample Curve:



Content:

Vial 1 (red top) 100 µl
Monoclonal antibody 4B10
Concentration: 1mg/ml in PBS

Vial 2 (white top) 400 µl
rBet v 1 Standard
Concentration: 1000ng/ml

Vial 3 (brown) 100 µl
Biotinylated monoclonal antibody 2E10
Dilute: 1:1000 for use

Storage: The ELISA kit should be stored at 4°C

For research and commercial use in vitro: not for human in vivo or therapeutic use.

Certificate of Analysis

Monoclonal Antibody: 4B10 (clone 4B10 D10 F8)
Immunogen: Birch pollen extract
Isotype: Mouse IgG1
Specificity: Binds to multiple isoforms of *Betula verrucosa* allergen, Bet v 1.
Purification: Produced in tissue culture and purified by affinity chromatography using Protein A. Single heavy and light chain bands on SDS-PAGE.
Concentration: 1mg/ml in phosphate buffered saline, pH 7.4. Based on A280 for IgG (1.42=1mg/ml) 0.22µm filtered, preservative free.
Lot Number: xxxxx

Monoclonal Antibody: 2E10 (clone 2E10 G6 G7)
Immunogen: Birch pollen extract
Isotype: Mouse IgG1
Specificity: Binds to a non-overlapping, conserved epitope on Bet v 1.
Purification: From tissue culture by ammonium sulphate precipitation and purified by affinity chromatography using Protein A. Single heavy and light chain bands on SDS-PAGE.
Biotinylation: Biotinylated and titrated for use in ELISA at 1/1000 dilution. Prepared in 1% BSA/50% glycerol/PBS, pH 7.4, 0.22µm filtered, preservative free.
Lot Number: xxxxx

Allergen Standard: rBet v 1a
Composition: Recombinant Bet v 1a prepared in 1% BSA/50% glycerol/PBS, 0.22µm filtered, preservative free, pH 7.4
Concentration: 1000ng/ml Bet v 1
Calibration: The rBet v 1a was produced from *Pichia* and purified by a multi-step chromatography procedure. Validity of the rBet v 1 standard was confirmed by comparison with the European Pharmacopoeia reference CRS (Y0001565), recombinant major allergen rBet v 1 containing 10.25µg of rBet v 1 per vial.
Lot Number xxxxx

ELISA protocol for Bet v 1

1. Coat polystyrene microtiter plates (NUNC Maxisorp Cert. NUNC catalog # 439454) with 100µl mAb 4B10 at 10µl/10ml, i.e. 1/1000 dilution of stock, in 50mM carbonate-bicarbonate buffer, pH 9.6, incubate overnight at 4°C.
2. Wash wells 3x with PBS-0.05% Tween 20, pH 7.4 (PBS-T). Incubate for 30 min. at room temperature with 100µl/well of 1% BSA, PBS-T. Wash 3x with PBS-T.
3. Use doubling dilutions of the rBet v 1 standard to make a control curve ranging from 100 - 0.2ng/ml Bet v 1: Pipette 20µl Bet v 1 standard into 180µl 1% BSA, PBS-T into wells A1 and B1 on the ELISA plate. Mix well and transfer 100µl across the plate into 100µl 1% BSA, PBS-T diluent to make 10 serial doubling dilutions. Wells A11, B11 and A12, B12 should contain only 1% BSA, PBS-T as blanks.
4. Add 100µl of diluted allergen samples and incubate for 1 hour at room temperature. House dust extracts for Bet v 1 analysis are routinely diluted two-fold from 1/10-1/80. Other sample types, like air filter extracts and allergen extracts, may require different dilutions.
5. Wash wells 3x with PBS-T and add 100µl diluted biotinylated anti-Bet v 1 mAb 2E10. The antibody solution contains 50% glycerol and should be diluted 1/1000 in 1%BSA, PBS-T. Incubate for 1 hour at room temperature.
6. Wash wells 3x with PBS-T and add 100µl diluted Streptavidin-Peroxidase (Sigma S5512, 0.25mg reconstituted in 1ml distilled water). The reconstituted Streptavidin should be diluted 1/1000 in 1% BSA, PBS-T. Incubate for 30 minutes at room temperature.
7. Wash wells 3x and develop the assays by adding 100µl 1mM ABTS in 70mM citrate phosphate buffer, pH 4.2 and 1/1000 dilution of H₂O₂. Read the plate when the absorbance at 405nm reaches 2.0-2.4.

Notes:

The Bet v 1 standard is recommended for immunoassay calibration purposes only. Not recommended for in-vitro antibody measurements, T cell studies, immunization purposes, or other uses.

Buffer recipes, storage conditions and a list of frequently asked questions can be found under "Protocols" on our web site: www.inbio.com.

For research and commercial use in vitro: not for human in vivo or therapeutic use.