

## References:

1. Pollart SM, Smith TF, Morris E, Gelber LE, Platts-Mills TAE, Chapman MD. Environmental exposure to cockroach allergens: analysis with monoclonal Antibody based enzyme immunoassays. *J Allergy Clin Immunol* 87:505-510, 1991.
2. Gelber LE, Seltzer LH, Bouzoukis JK, Pollart SM, Chapman MD, Platts-Mills TAE. Sensitization and exposure to indoor allergens as risk factors for asthma among patients presenting to hospital. *Amer Rev Respir Dis* 147:573-578, 1993.
3. Rosenstreich DL, Eggleston P, Kattan M, Baker D, Slavin RG, Gergen P, Mitchell H, McNiff-Mortimer K, Lynn H, Ownby D, Malveaux F. The role of cockroach allergy and exposure to cockroach allergen in causing morbidity among inner-city children with asthma. *New Eng J Med* 336:1356-1363, 1997.
4. Arruda LK, Vailes LD, Ferriani VP, Santos AB, Pomés A, Chapman MD. Cockroach allergens and asthma. *J Allergy Clin Immunol* 107:419-428, 2001.
5. Pomés A, Vailes LD, Helm RM, Chapman MD. IgE reactivity of tandem repeats derived from cockroach allergen, Bla g 1. *Eur J Biochem* 269:3086-3092, 2002.
6. Nalyanya G, Gore JC, Linker HM, Schal C. German cockroach allergen levels in North Carolina schools: comparison of integrated pest management and conventional cockroach control. *J Med Entomol* 46:420-427, 2009.



www.inbio.com

Indoor Biotechnologies, Inc.  
1216 Harris Street,  
Charlottesville,  
VA 22903  
United States

Tel: (434) 984-2304  
Fax: (434) 984-2709  
E-mail: [mail@inbio.com](mailto:mail@inbio.com)

Indoor Biotechnologies Ltd.  
Cardiff Medicentre  
Heath Park  
Cardiff CF14 4UJ  
Wales

Tel: +44 (0) 2920 68 2115  
Fax: +44 (0) 2920 68 2044  
E-mail: [info@indoorbiotech.co.uk](mailto:info@indoorbiotech.co.uk)

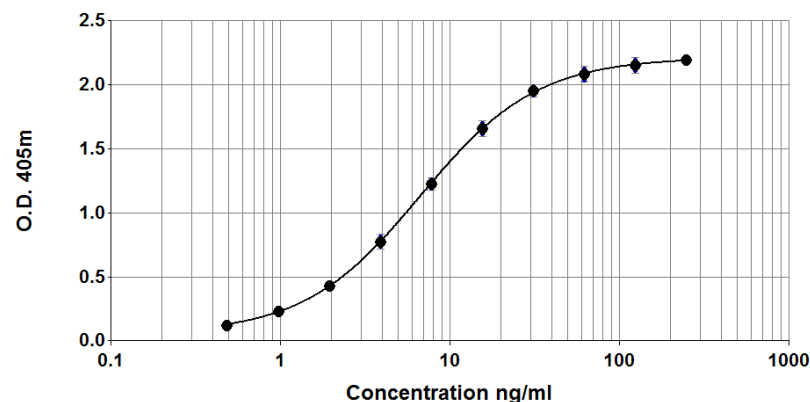


## Bla g 2 ELISA kit (7C11/BG2)

Product Code: EL-BG2

Lot Number: xxxxx

### Sample Curve:



### Content:

Vial 1 (red top) 100 µL  
Monoclonal antibody 7C11  
Concentration: 1mg/ml in PBS

Vial 2 (white top) 400 µL  
Universal Allergen Standard  
Concentration: 2500ng/ml

Vial 3 (brown) 100 µL  
Polyclonal Rabbit anti Bla g 2 antibody  
Dilute: 1:1000 for use

**Storage: The ELISA kit should be stored at 4°C**

**For research and commercial use in vitro: not for human in vivo or therapeutic use.**

## Certificate of Analysis

**Monoclonal Antibody:** 7C11 (clone 7C11 C2 A6)  
**Immunogen:** Bla g 2  
**Isotype:** Mouse IgG1  
**Specificity:** Binds to an epitope on cockroach *Blattella germanica* allergen, Bla g 2.  
**Purification:** Produced in ascites and purified by ammonium sulphate precipitation and affinity chromatography using Protein A. Single heavy and light chain bands on SDS-PAGE.  
**Concentration:** 1 mg/ml in phosphate buffered saline, pH 7.4. Based on A280 for IgG (1.42=1mg/ml), 0.22µm filtered, preservative free.  
**Lot Number:** **xxxxx**

**Antibody:** Rabbit polyclonal antiserum  
**Immunogen:** Recombinant Bla g 2  
**Isotype:** Multiple  
**Specificity:** The antiserum contains IgG antibodies to cockroach *Blattella germanica* allergen, Bla g 2 and does not react with Bla g 1.  
**Activity:** Titrated for use in ELISA at 1/1000 dilution. Prepared in 1% BSA/50% glycerol/PBS, pH 7.4, 0.22µm filtered, preservative free.  
**Lot Number:** **xxxx**

**Allergen Standard:** Universal Allergen Standard  
**Composition:** A formulation of eight purified natural allergens prepared in 1% BSA/50% glycerol/PBS, pH 7.4.  
**Lot Number:** **xxxxx**

Concentration:

Universal Allergen Standard	Protein Measurement	Concentration (ng/ml)
Der p 1	Amino-acid analysis	2500
Der f 1	Amino-acid analysis	2500
Der p 2	Amino-acid analysis	1000
Fel d 1	Amino-acid analysis	1000
Can f 1	Amino-acid analysis	2500
Rat n 1	Amino-acid analysis	1000
Mus m 1	Amino-acid analysis	250
<b>Bla g 2</b>	<b>Amino-acid analysis</b>	<b>2500</b>

## ELISA Protocol for Bla g 2.

- Coat polystyrene microtiter plates (NUNC Maxisorp Cert. NUNC catalog # 439454) with 100µl mAb 7C11 at 10µl/10ml, i.e. 1/1000 dilution of stock, in 50mM carbonate-bicarbonate buffer, pH 9.6, incubate overnight at 4°C.
- Wash wells 3x with PBS-0.05% Tween 20, pH 7.4 (PBS-T). Incubate for 30 min. at room temperature with 100µl/well of 1% BSA, PBS-T. Wash 3x with PBS-T.
- Use doubling dilutions of the Universal Allergen standard to make a control curve ranging from 250 - 0.5ng/ml Bla g 2: Pipette 20µl UAS into 180µl 1% BSA, PBS-T into wells A1 and B1 on the ELISA plate. Mix well and transfer 100µl across the plate into 100µl 1% BSA, PBS-T diluent to make 10 serial doubling dilutions. Wells A11, B11 and A12, B12 should contain only 1% BSA, PBS-T as blanks.
- Add 100µl of diluted allergen samples and incubate for 1 hour at room temperature. House dust extracts for Bla g 2 analysis are routinely diluted two-fold from 1/10-1/80. Other sample types, like air filter extracts and allergen extracts, may require different dilutions.
- Wash wells 3x with PBS-T and add 100µl diluted polyclonal Rabbit anti Bla g 2 antibody. The antibody solution contains 50% glycerol and should be diluted 1/1000 in 1%BSA, PBS-T. Incubate for 1 hour at room temperature.
- Wash wells 3x with PBS-T and add 100µl diluted Peroxidase conjugated Goat anti-Rabbit IgG (Jackson Laboratories Cat# 111-036-046, reconstituted in 1 ml distilled water and 1ml glycerol). The reconstituted Goat anti-Rabbit IgG should be diluted 1/1000 (i.e. 10µl/10ml) in 1% BSA, PBS-T. Incubate for 1 hour at room temperature.
- Wash wells 3x and develop the assays by adding 100µl 1mM ABTS in 70mM citrate phosphate buffer, pH 4.2 and 1/1000 dilution of H<sub>2</sub>O<sub>2</sub>. Read the plate when the absorbance at 405nm reaches 2.0-2.4.

Notes:

*The Bla g 2 standard is recommended for immunoassay calibration purposes only. Not recommended for in-vitro antibody measurements, T cell studies, immunization purposes, or other uses.*

*Buffer recipes, storage conditions and a list of frequently asked questions can be found under "Protocols" on our web site: [www.inbio.com](http://www.inbio.com).*

**For research and commercial use in vitro: not for human in vivo or therapeutic use.**